

## Burnout Survey 2016

Surveys emailed to Erlanger and UT physicians and residents = 685  
Response received = 228  
Survey response rate = 33.2%  
Faculty/Attending = 157  
Residents = 71

### **Some characteristics of responders**

Mean (SD) Age = 42.7 (12.9) years  
Median Age (IQR) = 39 (21) years

Males = 149 (65.3%)  
Females = 78 (34.2%) [one person didn't answer question]

US Medical Graduates = 189 (82.9%)  
Foreign Medical Graduates = 34 (14.9) [5 didn't answer the question]

### **Specialty**

Internal Medicine = 36  
Family Medicine = 23  
Surgery = 22  
Emergency Medicine = 20  
Pediatrics = 39  
Others = 39

### **Satisfied with Job**

Dissatisfied = 18  
Neutral = 24  
Satisfied = 119  
Very Dissatisfied = 6  
Very Satisfied = 59  
Didn't answer = 2

### **Recommend Erlanger or UT for employment to friends and family**

Yes = 130  
No = 18  
May be = 78  
Didn't answer = 2

### **Do you sometime think about leaving Erlanger or UT?**

Yes = 124  
No = 100  
Didn't answer = 4

**Burnout Evaluation: We used Oldenburg burnout inventory which has two dimensions of burnout and both need to be evaluated separately.**

**Overall Disengagement score on Burnout scale**

Mean (SD) = -2.7 (3.4)

Median (IQR) = -3.0 (4)

**Overall Exhaustion score on Burnout scale**

Mean (SD) = -0.36 (3.8)

Median (IQR) = 0.0 (5)

	Disengagement	Exhaustion
<b>Gender</b>		
Males	-2.9	-0.76
Females	-2.4	0.39
<b>P-value</b>	<b>0.35</b>	<b>0.03</b>
<b>Specialty</b>		
Cardiology	-1.5	-0.33
EM	-1.9	-0.42
FM	-1.7	0.14
IM	-3.5	-1.09
OBGYN	-1.9	-1.12
Ortho	-2.8	0.71
Others	-2.7	0.13
PEDS	-2.9	0.10
Plastics	-2	-2.5
Surgery	-4.1	-1.32
Urology	-2.2	1.33
<b>P-value</b>	<b>0.38</b>	<b>0.54</b>
<b>Attending/Resident</b>		
Faculty/Attending	-3.15	-0.77
Resident	-1.77	0.54
<b>P-value</b>	<b>0.005</b>	<b>0.008</b>

**Figure:** Overall distribution of the two burnout dimension (upper) and distribution by gender (middle) and attending/resident status (lower)

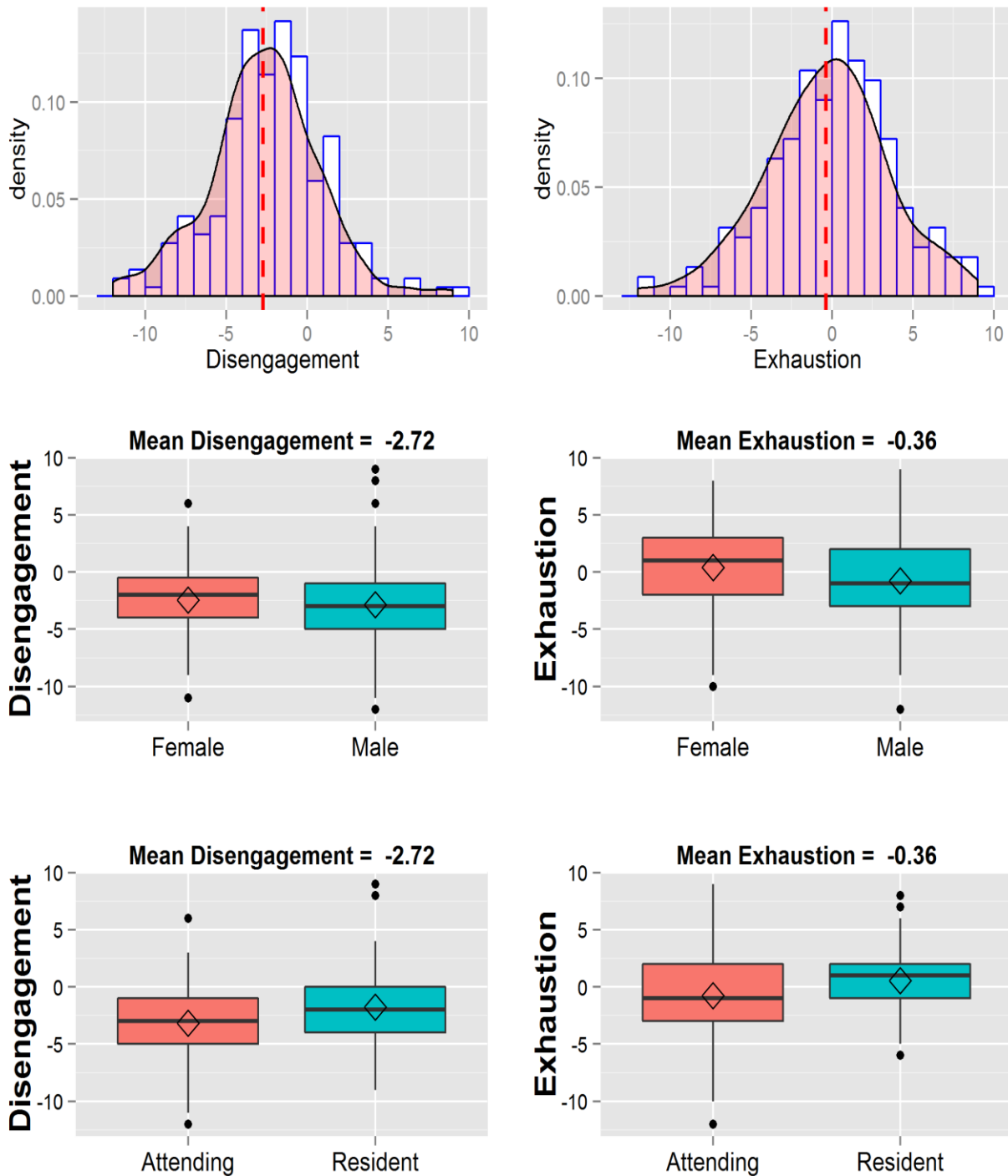
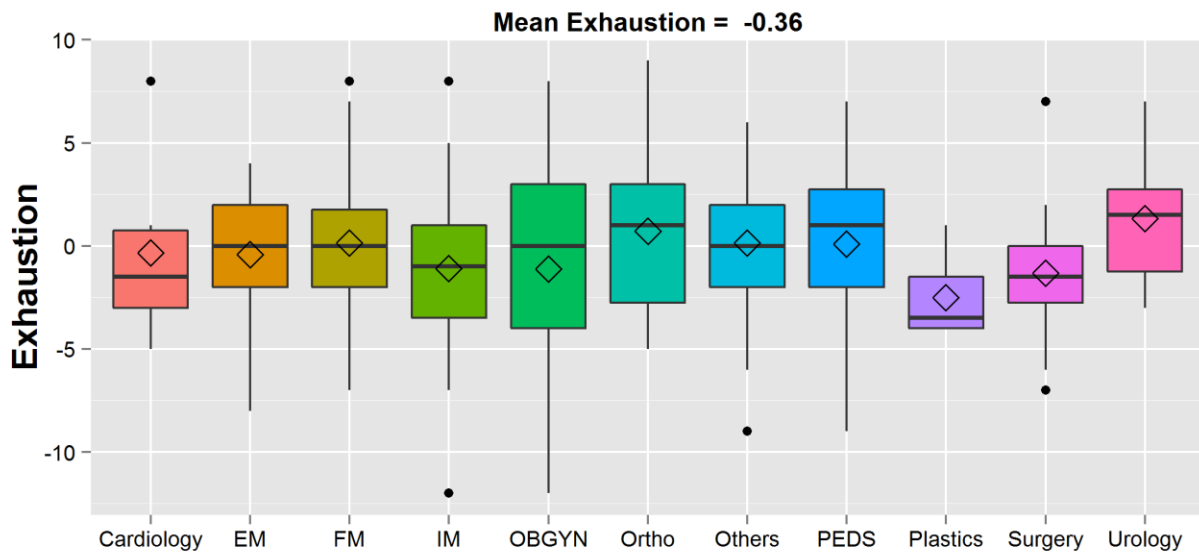
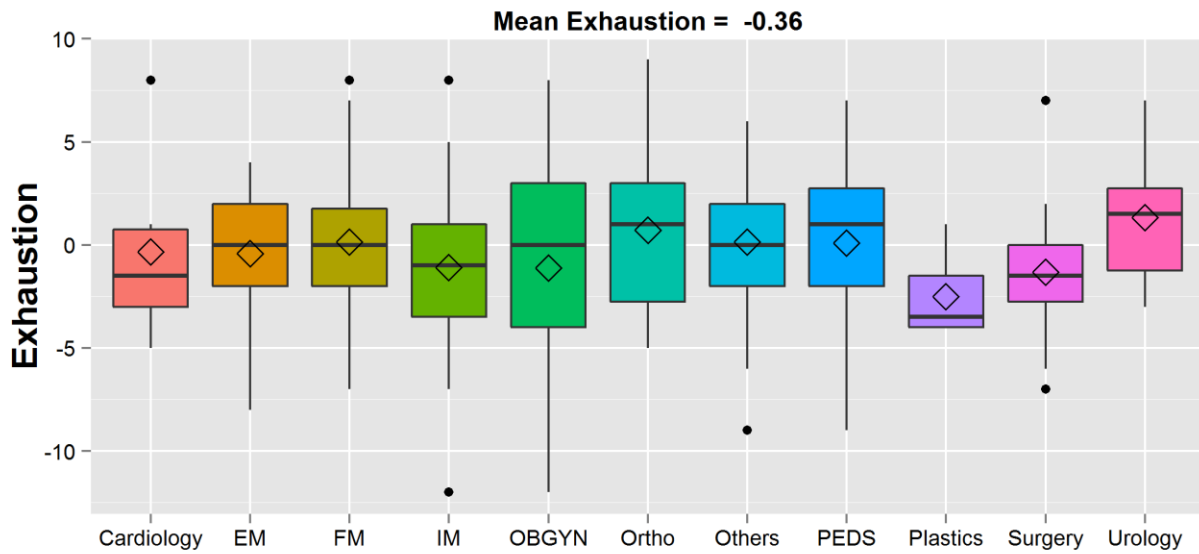


Figure: Comparison of different specialties by burnout dimensions



**Figure:** Modifying effect of age on burnout dimensions by attending/resident status

